

CSL

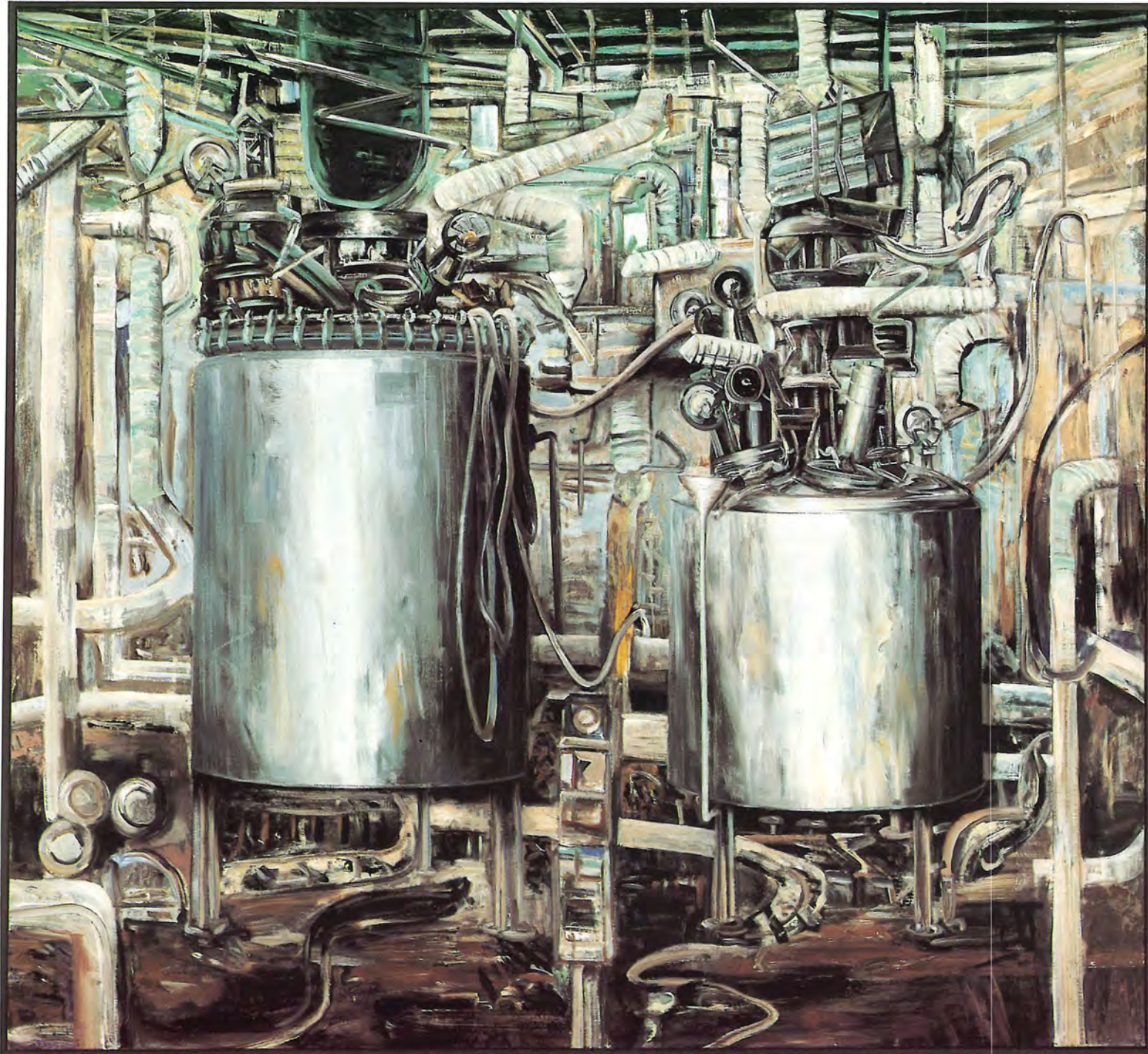
70

1916~1986



COMMONWEALTH SERUM LABORATORIES COMMISSION
THE SEVENTIETH ANNIVERSARY EXHIBITION

A collection of paintings, drawings and photographs by Jan Senbergs and Mark Johnson.



The Brew: Jan Senbergs

FOREWORD

Seventy years in the life of any person is a justifiable time for reflection and 'remembrance of times past'. So it can be also for an organization. This is particularly so when that organization has been privileged to serve the nation as the prime focus for public health advances through the provision of life-saving and life-enhancing biologics. The contribution of CSL since its foundation in 1916 has only been possible because of the vision of Commonwealth Governments, the devotion and skills of people who have worked there during its lifetime and the advances in biological science.

To record aspects of CSL as it is today and to acknowledge the debt we owe to all who have contributed to its success the Commonwealth Serum Laboratories Commission asked Jan Senbergs and Mark Johnson to express the sense of

mission, the achievements and the working entity that is CSL whose activity touches the lives of all Australians. The collection surely can be described as vital, accurate and imaginative. It adds both to the culture of the organization which it portrays and the nation which sponsored it.

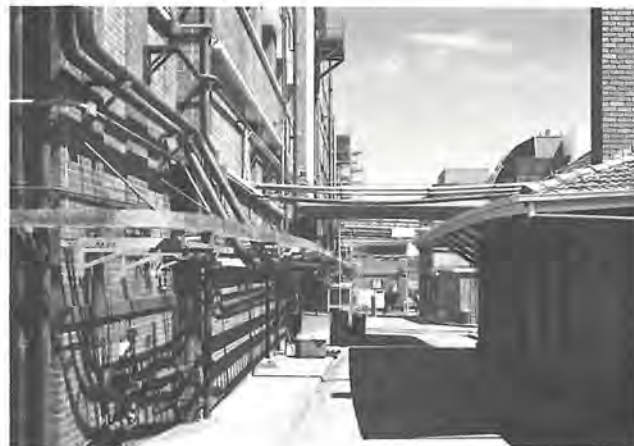
On behalf of the Commonwealth Serum Laboratories Commission I rejoice that this collection is to tour Australia and I am confident that there will be outstanding public support for this contribution to our heritage which so fittingly complements our unique position in Australian life.

We are proud of this collection which marks our 70th Anniversary and heralds a further development of our organisation which is apace with the rapidly changing face of biotechnology and therapeutics.

I thank Barrett Watson and the Powell Street Gallery for the work they have put into producing the exhibition.

Above all I thank Jan Senbergs and Mark Johnson for their limnings which vividly bring together the arts, science and industrial-scale biotechnology.

Neville J. McCarthy, A.Q.,
Managing Director



Third Avenue. View South. CSL 1986
© Mark Johnson



Right: Disused Penicillin Plant (corn steep tanks). CSL 1986
© Mark Johnson

THE STORY OF CSL

THREE SCORE YEARS AND TEN A Contribution to Health and Longevity

1986 brings CSL to the 70th year of its noble career. Those years have brought credit to the government which made the initial decision and those which have continued to support it. CSL has earned fame at home and abroad, given gainful and satisfying employment to thousands of Australians, shown that a government-owned manufacturing organisation can be efficient and profitable and above all played an unparalleled role in contributing to public and personal health.

As long ago as 1904 the Commonwealth Quarantine Conference resolved that "The Director-General (of Quarantine) shall be provided with a biological laboratory under his own control", but no action was taken to implement this resolution until the exigencies of the Great War. Eventually it was the shortage of Diphtheria Antitoxin, caused by the problem of shipping to Australia, that provided the spur to action.

The following chronology traces some of the more notable events in the life of the great Australian institution which resulted.

1915

On 21 September, 1915 a deputation headed by Canon Hughes and representing the Melbourne Metropolitan Board of Supplies waited on the Minister for Trade and Customs, Mr Tudor, urging the need for a local facility to manufacture therapeutic sera. The case was supported in the columns of the Medical Journal of Australia. Just one month later on 21 October, 1915 the Minister announced the decision to establish a Federal Serum Institute.

1916

It was April, 1916, before the organisation could be said to exist, when the appointment of the first staff member — the founding Director, Dr W.J. Penfold — was made.

Dr Penfold, who was a bacteriologist at the Lister Institute of Preventative Medicine, London, made visits to other vaccine laboratories in England, France and the United States of America, before he arrived in Australia late in 1916.

1917

CSL began the production of biologicals in accommodation kindly provided by the Walter and Eliza Hall Institute, in that



Dr W.J. Penfold



Institute's building in the grounds of the Melbourne Hospital, Lonsdale Street, Melbourne. Thus began a collaboration, that has continued until the present day, between two institutes that were destined to take prominent places in Australian and world medicine.

Meanwhile, work began to construct laboratories for CSL on its present site at Parkville.

1918

With the completion of the first laboratory complex at Parkville, CSL transferred its operations from the Hall Institute in August 1918.

This original building, which is still in use today, has for many years been known at CSL as East Block.

1919

The infant organisation faced its first major crisis when it was called on to meet the challenge of the influenza pandemic. Contemporary reports vividly demonstrate the concern of government and the general populace, as the disease spread and the number of fatalities rose. In a short time, CSL produced and distributed over three million doses of mixed bacterial influenza vaccine, quickly justifying its foundation, which had been based in part on the need for an organisation "... to meet emergencies".

1920

By 1920, five different therapeutic sera, 24 vaccines, four tuberculins and a range of laboratory diagnostic agents and bacteriological media were being produced. Late that year, a Diphtheria Toxin/Antitoxin Mixture was introduced, a product which continued for a number of years as the accepted agent for active immunisation against diphtheria, one of the most dreaded infectious diseases of the first quarter of the twentieth century.

1922

Although tuberculins for use in bovines had been manufactured for several years, 1921-22 saw the introduction of veterinary vaccines. It is from this time that expansion into the veterinary field began seriously.

1923

The benefit to Australia of a local manufacturing facility was again demonstrated when CSL began manufacture of the newly-discovered treatment for diabetes — insulin. CSL was

one of only four laboratories in the world licensed to produce insulin on a commercial scale.

The discovery of insulin by Banting and Best in Toronto was announced in 1922, and by the end of that year, CSL had produced its first experimental batch.

The first issues of insulin were made by March 1923. By August 1923, all local restrictions on its issue to practitioners had been removed. CSL can well be proud of its achievement in making sufficient insulin available to meet the entire needs of Australia's diabetics so soon after its original discovery.

A young man named Jack Griffiths participated in the production of that first batch. He went on to work at CSL for over 40 years, and rose to occupy key professional positions in CSL's production activities.

1924

First separate veterinary products price list issued. The range included the first live bacterial vaccine distributed by CSL — Bangs Bacillus Vaccine (Living) for prevention of contagious abortion in cattle (Brucellosis).

1925

Human sera for prophylactic and therapeutic use was prepared from the blood of persons recovered from poliomyelitis, measles and scarlet fever. This was pioneering work, for the same method was adopted later for the production of the vast quantities of pooled human serum for continuous transfusion required during the war years.

1926

By 1926, laboratory and office accommodation had become grossly overcrowded, so a large three-storey building, traditionally known as South Block, was built. This housed dispensing, packaging, stores, despatch and office staff, together with staff amenities.

1927

Dr Penfold resigned, to accept the position as foundation Director of the Baker Medical Research Institute.

Dr F.G. Morgan, who had been on CSL's staff since 1921, became Director. He held the position for almost 30 years, during which time the laboratories' growth can be judged by the staff increase from approximately 100 in 1927 to approximately 900 at his retirement.

Work commenced on the development of diphtheria



Mr J.H. Griffiths



Dr F.G. Morgan



Dr E.V. Keogh

"anatoxin", an early toxoid. This product was successful and quickly replaced diphtheria toxin-antitoxin mixture as the immunising agent of choice.

1930

Tiger Snake Antivenom released for use, following several years' research in conjunction with the Walter and Eliza Hall Institute. This marked the beginning of a long program at CSL resulting in the development of antivenoms against all major Australian venomous snakes and spiders.

1933

Continued expansion of activities resulted in the construction of North Block. The new building housed packaging, despatch, and the office staff, all of which were transferred from South Block, where additional technical laboratories were provided, notably for a greatly expanded Serum Concentration Department.

1935

A research section, separate from and entirely independent of production activities, was established under Dr E.V. Keogh. Its aim was to develop new knowledge and skills, and its work was additional to that conducted by production staff. The new section worked in close collaboration with Dr (later Sir) Macfarlane Burnet at the Walter and Eliza Hall Institute.

1936

The Broadmeadows Field Station was established, principally to provide adequate grazing for the horses used in production of antitoxins, snake-antivenoms and blood for culture media. The production of calf lymph and all virus research work also transferred to Broadmeadows.

1938

The threat of war led to a great deal of preparatory work to ensure the availability of supplies to service and civilian personnel. Tetanus Prophylactic (Formalinised Toxoid) for active immunisation against tetanus was developed and produced in large quantities. Its effectiveness was well illustrated when not one Australian serviceman contracted tetanus during World War II.

1940-45

CSL supplied urgently needed biological products to the armed services operating in the Pacific, Egypt, Palestine, India, Burma, Malaya and Netherlands East Indies. Millions

of doses of preventive agents against tetanus, smallpox, typhoid fever, plague and cholera were supplied, whilst at the same time unbroken supply of vital products such as insulin was maintained for civilian use.

Other major war-time contributions to the defence effort were in the areas of blood grouping and the provision of pooled human serum.

The need to establish every recruit's blood group demanded an enormous and urgent increase in the production of blood grouping sera. CSL successfully supplied the entire requirement for such sera, much of the work being done voluntarily by CSL staff at night.

The provision of a more stable solution of the blood proteins for use in the field was an urgent need. CSL's experience in the preparation of human convalescent serum led it to the development of pooled human serum, which was used extensively in the treatment of surgical and wound shock. The product had great advantages over the use of plasma, which was the main blood substitute used in the UK, USA and Canada.

CSL was indeed a major contributor in this time of national need.

1944

Following the decision of the Australian War Cabinet in 1943 that penicillin be produced, Dr E.V. Keogh recommended that Captain P.L. Bazeley, a CSL officer then serving with the 2/8th Australian Armored Regiment in New Guinea, be appointed to head the project. With Lieutenant H. Kretchmar, a science graduate with Public Health Laboratory experience, Captain Bazeley visited production plants in the United States of America, and returned to Australia to initiate production.

Then began a remarkable series of improvisations, with men and materials in short supply, which resulted in an efficient, highly specialised plant being installed at CSL. With Mr G. Anderson, Mr H.C. Cochrane, Mr C.L. Biggs and Dr J.J. Graydon heading the various processing sections, the team, by February 1944, was supplying the needs of the Australian forces and some of the US forces in the Pacific combat area. Shortly afterwards, Australia became the first country in the world to make regular supplies available to the civilian population.

The project was a triumph for CSL. There developed a comradeship and enthusiasm among the staff that is hard to describe. They earned the gratitude of the nation. CSL had



Vaccination parade in South-East Asian war zone
(Australian War Memorial Neg. no. 119032)



Childhood immunisation



Penicillin pioneers P.L. Bazeley and H.C. Cochrane at a 1984 reunion.

again demonstrated the need for a local pharmaceutical manufacturing facility, and its own ability to successfully meet the challenges of new technology.

1947

The production of BCG vaccine for the prevention of tuberculosis was commenced. This was the first living bacterial vaccine for human use by CSL.

1952

The separation of human plasma into its different fractions, each of which contains proteins with properties useful in therapy, has been one of the major advances in modern medicine. Dr E.J. Cohn of Harvard University developed the cold ethanol fractionation process, and CSL sent Mr F.J. Dempster, an experienced protein chemist, to Harvard to study the process.

Plant was installed at CSL, and probably the most important product of this fractionation plant, human serum albumin, was first produced in 1952.

The collaboration between CSL, the Australian Red Cross Society Blood Transfusion Service and Australian voluntary blood donors, by which patients receive plasma fractions including clotting factors free of charge, is a model for the world to follow.

1953

Triple Antigen vaccine, for the immunisation of infants and young children against diphtheria, whooping cough and tetanus, was introduced.

1956

After working with Dr Jonas Salk in the United States on the development of a vaccine against poliomyelitis, Dr P.L. Bazeley returned to Australia to once again find himself pioneering the production of an important new weapon against disease. With a team that included Mr L.J. Davis, Dr M.F. Warburton and Mr J.R. Thayer, 25 million doses of Salk poliomyelitis vaccine were produced over the next 10 years.

Dr Bazeley succeeded Dr Morgan as Director in 1956.

1959

The Woodend Field Station was established, with a view to closing the Broadmeadows facility which, at the then current production levels, was proving too small and was adversely affected by the encroachment of suburban housing.

1961

CSL established as a Commonwealth Statutory Authority, under the control of a Board of Commissioners. Dr R.W. Greville became the Commission's first Director.

The early years of the Commission saw upgrading of the marketing function, the establishment of a Research Unit at Wewak to study local diseases, the development of several new antivenoms, including a polyvalent snake antivenom for treatment of the bites of unidentified snakes, and a substantial engineering program, including enlargement of the plasma fractionation plant.

1966

Dr W.R. Lane succeeded Dr Greville as Director, following Dr Greville's appointment to a senior position in the Commonwealth Department of Health.

1967

Agents appointed for CSL products in Singapore, Malaysia and Hong Kong.

1968

Following original work at the Australian National University, CSL undertook development work which led to the production of a sub-unit influenza virus vaccine, which was released for the 1968 winter.

1971

CSL awarded its first Export Award for outstanding achievements in export markets. This was followed by further awards in 1977 and 1982.

1972

As part of the upgrading of facilities initiated during Dr Lane's service as Director, new four storey Quality Control Laboratories were built on the site of the Old North Block. This building was subsequently named the W.R. Lane Quality Control Laboratories.

1974

Dr N.J. McCarthy appointed as Director, following the death of Dr Lane.

1977

The Burnet Library completed and officially opened by Mr R.J. Hunt, Minister for Health.



Dr R.W. Greville



Dr N.J. McCarthy



Dr W.R. Lane



Sir Macfarlane Burnet

1978

CSL again demonstrates its vital national interest role, by undertaking urgent investigative work into bluetongue vaccine, following the isolation of bluetongue virus in Australia.

1981

Important original work led to the production for field trial of a purified Q-Fever vaccine, bee venom extract and funnel web spider antivenom. The production of Interferon for a major clinical trial was commenced.

One of the many international aid projects with which CSL has been associated — a major Foot and Mouth Disease Vaccine project at Surabaya, Indonesia — was successfully completed.

1983

CSL designed as a WHO Collaborating Centre for Serology and Production and Quality Control of Vaccines. This recognition followed CSL's long-standing status as a WHO Influenza Reference Centre, WHO National Blood Grouping Reference Laboratory, WHO Brucellosis Centre, and National Rabies Diagnostic Centre.

The introduction of important new products continued, with the release of CLA vaccine to combat a major disease in sheep.

1984

The P.L. Bazeley Human Vaccine Building opened by the Prime Minister, The Hon R.J.L. Hawke.

Heat treatment of clotting factors was introduced, thus removing the risk of AIDS transmission to haemophilia sufferers through these products.

1985

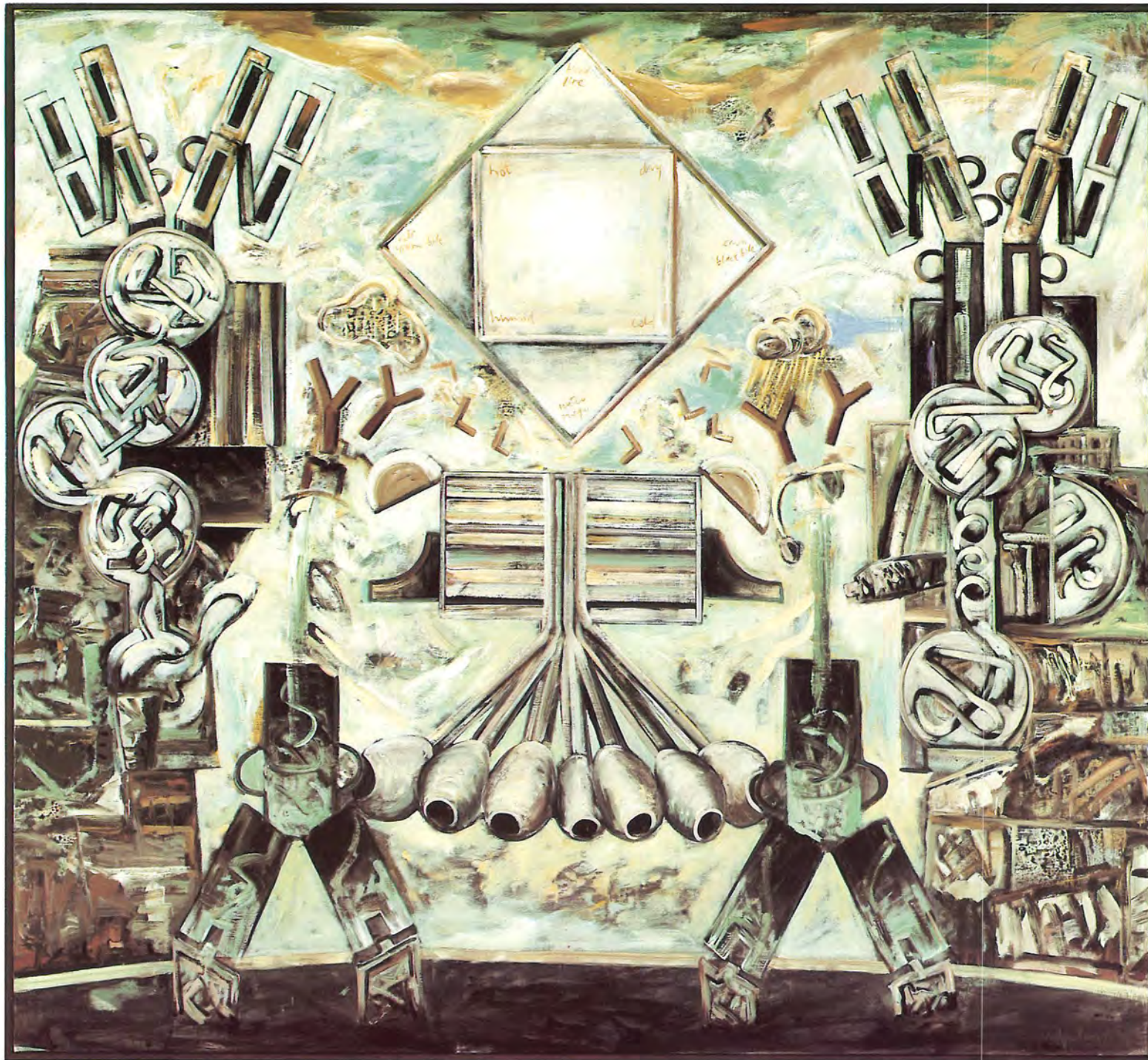
CSL-NOVO, a joint venture company of CSL and Novo Industri A/S, Denmark, commenced the marketing of insulin produced in collaboration by the two partners.

As CSL approaches its 70th anniversary, it is clear that it has served Australia well. It has been responsible for making available to Australians the latest advances in therapeutic medicine at times which would otherwise have been unattainable; it has responded brilliantly to national emergencies in times of war as in times of peace; it has developed products to counter the effects of peculiarly Australian health hazards.

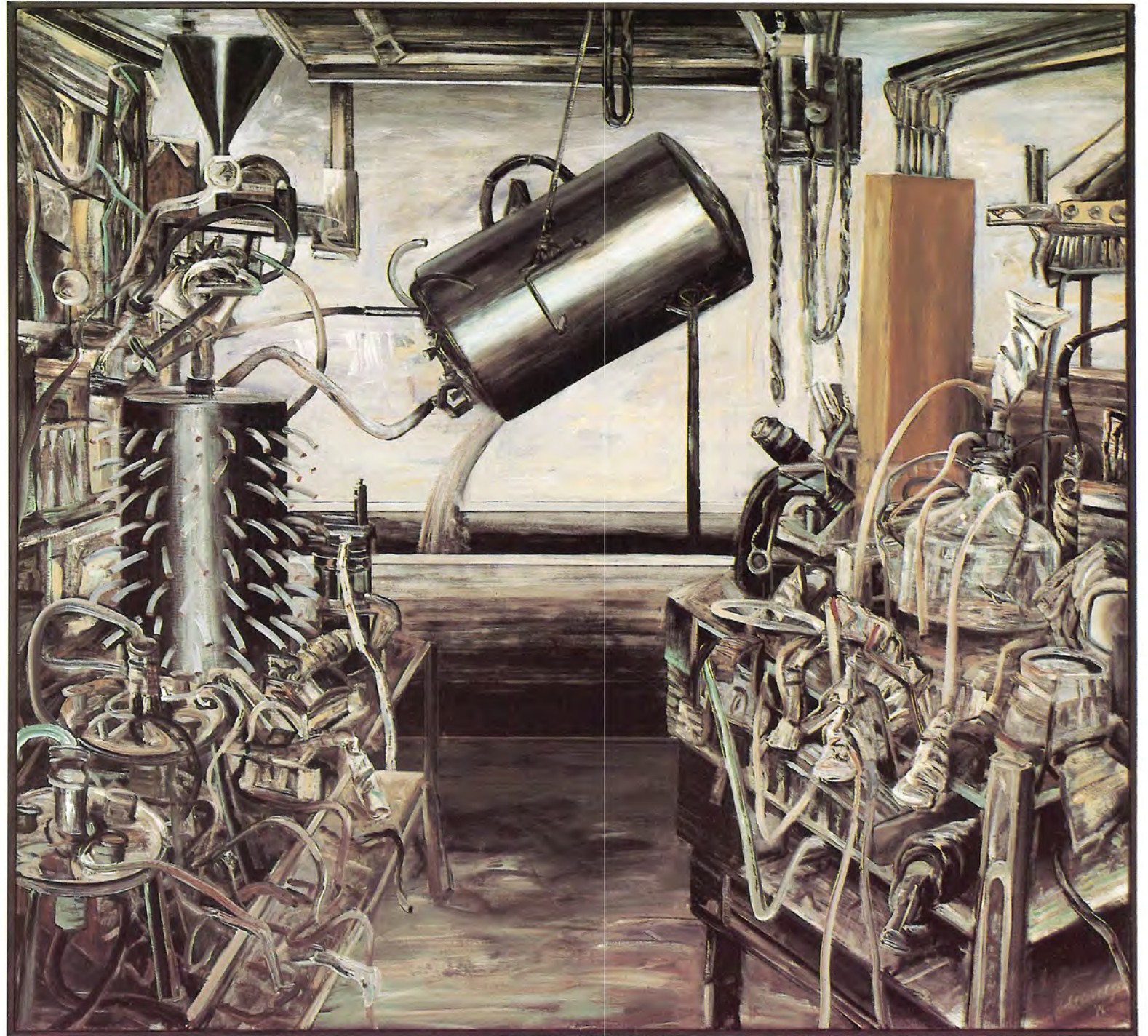
CSL stands today as the national biological and pharmaceutical manufacturer, making a significant contribution to the health of Australians by its role in many vital areas. A major function, plasma fractionation, provides a contemporary example of the value to Australia of CSL.

It provides the nation with a significant research and development facility, where product development and basic research of great importance go hand-in-hand.

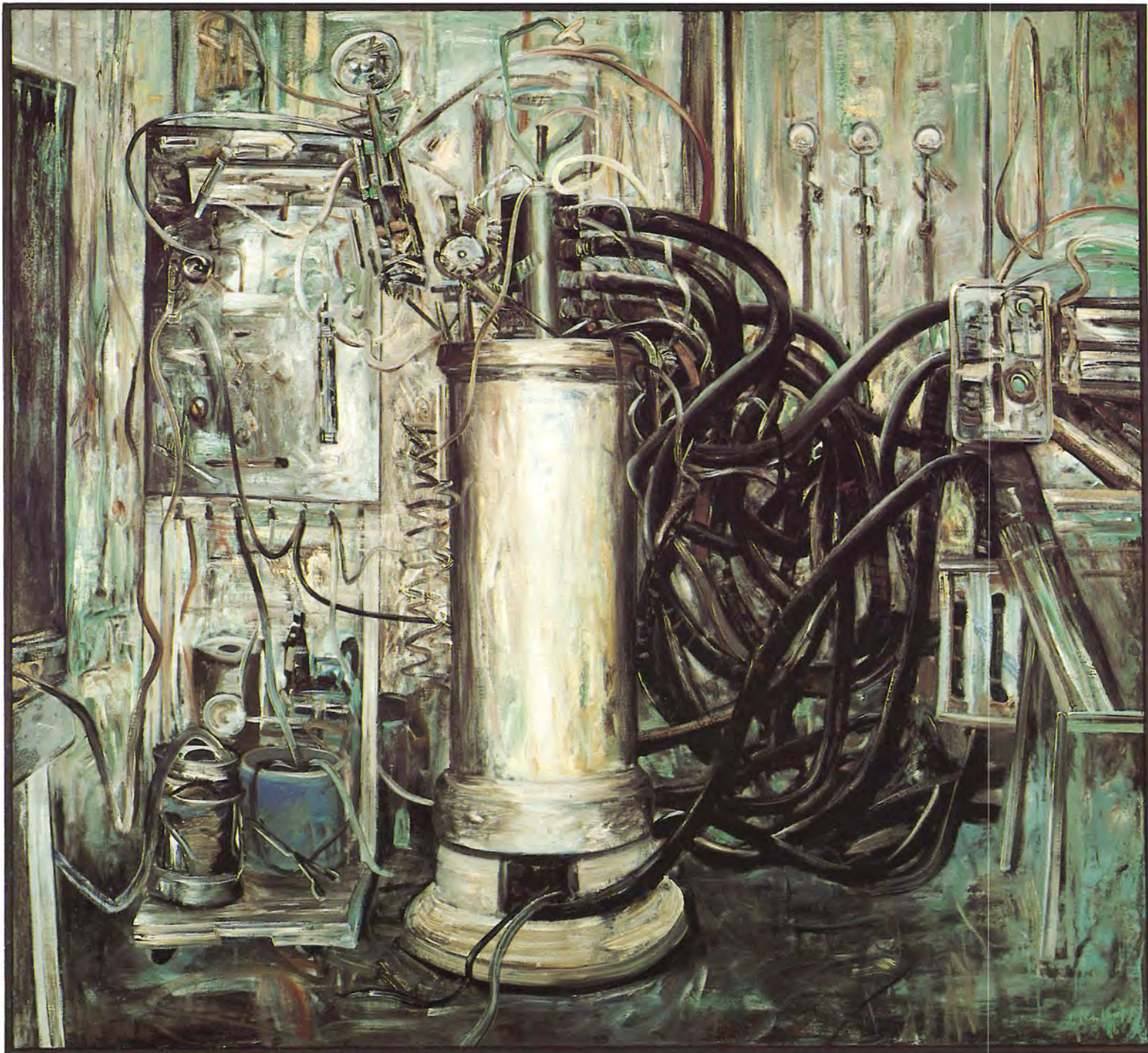
Just as CSL is proudly Australian, so can Australia be proud of CSL.



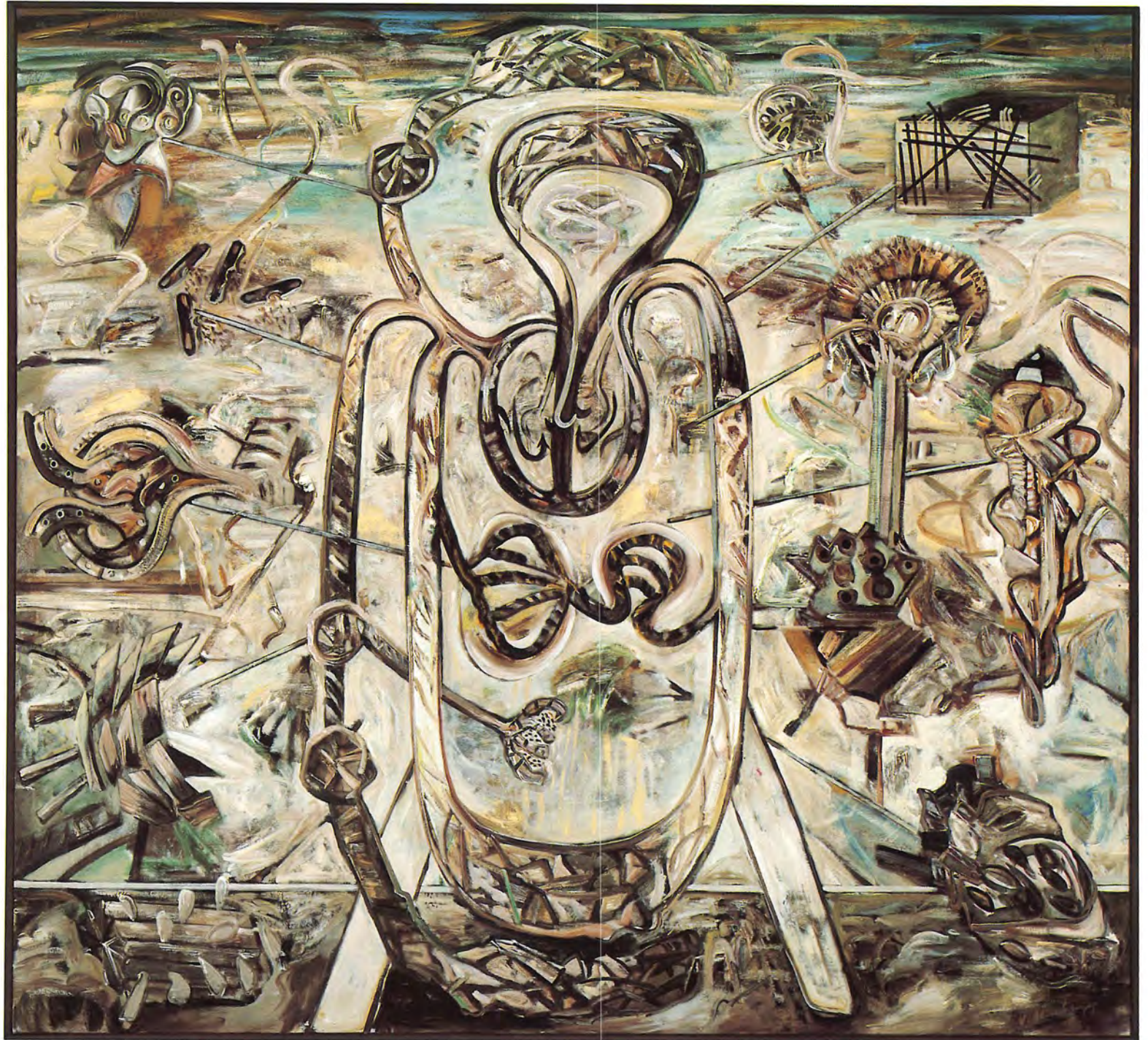
Towards a Harmony of the Humors:
Jan Senbergs



The Wash: Jan Senbergs



The Spin: Jan Senbergs



Journey to Peyer's Patch: Jan Senbergs

Mark Johnson

Biography

Born Sydney, 1946. Lives and works in Sydney.

MARK JOHNSON CATALOGUE

14. Walkway between old Insulin Building and Compressor House — view west. CSL 1986.
15. Walkway between old Insulin Building and Compressor House — view west. CSL 1986.
16. Ash handling plant (disused). Boiler House. CSL 1986.
17. Third Avenue — view south. CSL 1986.
18. Fifth Avenue — view south. CSL 1986.
19. Ninth Avenue. CSL 1986.
20. First Avenue. CSL 1986.
21. Corner Fourteenth Street and Thirteenth Avenue. CSL 1986.
22. Thirteenth Avenue. CSL 1986.
23. Eleventh Avenue. CSL 1986.
24. View from Fourth Street between Experimental Animal House and Store No. 1. CSL 1986.
25. Seventh Avenue. CSL 1986.
26. Eighth Street. CSL 1986.
27. Fourth Street — west end. CSL 1986.
28. Fourth Street — view east. CSL 1986.
29. View north from Eighth Street — old distillation plant. CSL 1986.
30. Third Avenue — view north. CSL 1986.
31. Sixth Street. CSL 1986.
32. Fourth Street — view west. CSL 1986.
33. South end Seventh Avenue — view towards Fifth Avenue. CSL 1986.
34. Fifth Avenue — view north. CSL 1986.
35. Cooling Tower no. 3. CSL 1986.
36. Disused penicillin plant (corn steep tanks). CSL 1986.
37. View north from Boiler House. CSL 1986.
38. View southwest from West Block. CSL 1986.
39. View northwest from West Block. CSL 1986.
40. Fermentation Tanks. CSL 1986.
41. Cooling Towers. CSL 1986.
42. Woodend — view east. CSL 1986. (press print title: Woodend I).
43. Woodend — view south. CSL 1986. (press print title: Woodend II).

All images measure 39 × 56 cm.

ONE PERSON EXHIBITIONS

- | | |
|------|--|
| 1978 | The Australian Centre for Photography, Sydney. |
| 1981 | The Australian Centre for Photography, Sydney. |

- | | |
|------|---|
| 1981 | The Developed Image, Adelaide. |
| 1985 | The Australian Centre for Photography, Sydney. |
| 1986 | International Museum of Photography, George Eastman House, Rochester, NY. |
| 1986 | Festival International de la Photographie, Liege. |

SELECTED GROUP EXHIBITIONS

- | | |
|------|--|
| 1978 | "The CSR Photography Project: Pyrmont Refinery Centenary", The Australian Centre for Photography and national tour. |
| 1979 | "Australian Photographers. The Philip Morris Collection", Sydney and Melbourne. |
| 1981 | "Sydney Focus/Melbourne Shift", Victorian College of the Arts (Melbourne) and The Developed Image (Adelaide). |
| 1982 | "Landscape, Australia", National Gallery of Victoria (Melbourne). |
| 1983 | "A Decade of Australian Photography 1972-1982. The Philip Morris Arts Grant", Australian National Gallery (Canberra). |
| 1983 | "The 1984 Show", IMAGES (Sydney). |
| 1984 | "Architecture and Photography 1848-1982", National Gallery of Victoria, Melbourne. |
| 1984 | Paul Hewson, Mark Johnson, Geoff Kleem, Bruce Searle, IMAGES (Sydney). |
| 1984 | "After the Artefact", Wollongong City Gallery, Newcastle Region Art Gallery (1985), Ivan Dougherty Gallery (Sydney, 1985). |
| 1984 | "Fixed in Time — Australian Photographs 1845-1954", State Library of New South Wales (Sydney). |
| 1986 | "Australian Landscape Photographed", NGV and Interstate Tour. |

AWARDS

- | | |
|------|--------------------------|
| 1983 | Visual Arts Board Grant. |
|------|--------------------------|

COMMISSIONS

- | | |
|------|-------------------------------|
| 1978 | CSR Photography Project |
| 1979 | Hill Samuel Australia Limited |

BIBLIOGRAPHY

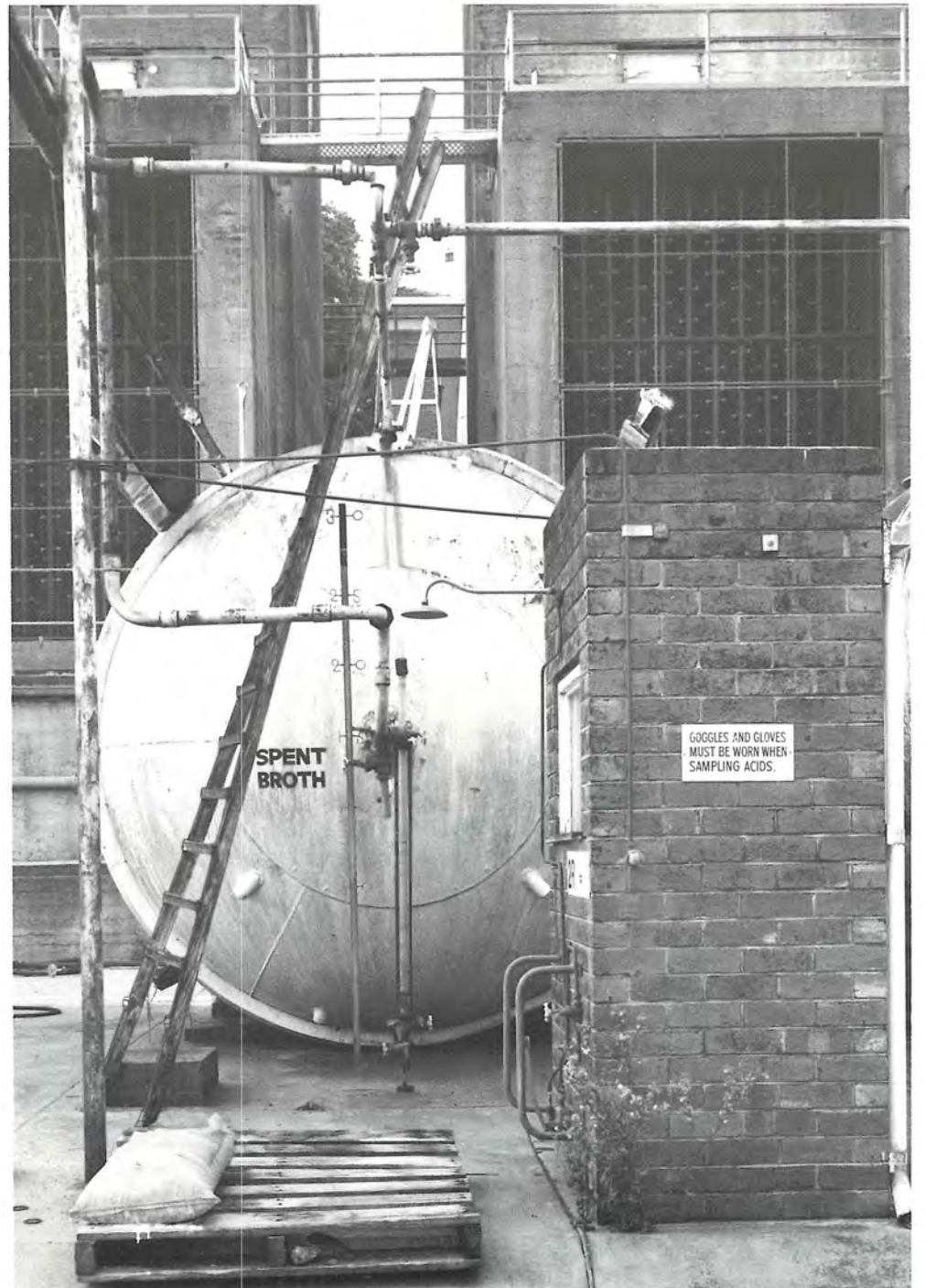
- "Australian Centre for Photography: Mark Johnson — Emmet Gowin", Deborah Marlowe, *Camera and Cine*, September 1978.
- "CSR — a Vital Commitment", Deborah Marlowe, *Camera and Cine*, November 1978.
- "CSR show: No trouble at mill", Sandra McGrath, *The Australian*, 21.9.78.

- "Through a lens sweetly", Arthur McIntyre, *ART and Australia*, Winter 1979.
- "The CSR Project", Deborah Marlowe, *Australian Camera Annual*, 1979.
- "Flagging Medium Revived", *The Age*, 29.5.79.
- "Photography in the Australian Art Scene", Christine Godden, *ART and Australia*, Summer 1980 (reprinted in *Anything Goes. Art in Australia 1970-1980*, ed. Paul Taylor, 1984).
- "Exhibition only mildly interesting", Tony Perry, *The Age*, 14.4.81.
- "Through the 'looking glass'", Neville Weston, *The Advertiser*, 1.7.81.
- "Mark Johnson — Sydney Foreshores", catalogue essay, The Australian Centre for Photography, 1981.
- "Man finds no place in black and white prints", Max Dupain, *The Sydney Morning Herald*, 22.10.81.
- Landscape, Australia*, Jennie Boddington, National Gallery of Victoria exhibition catalogue, 1981.
- "Mark Johnson" (interview/portfolio), *Words and Visions*, no 9/10, 1982.
- "Images and good omens", Mark Hinderaker, *The Sydney Morning Herald*, 11.7.83.
- "Anarchy, satire and '80s camp", Terence Maloon, *The Sydney Morning Herald*, 10.9.83.
- "Sydney Topography: the photographs of Mark Johnson", John Delacour, *ART and Australia*, Autumn 1984.
- Architecture and photography 1848-1982*, Jennie Boddington, National Gallery of Victoria exhibition catalogue, 1984.
- After the Artefact*, exhibition catalogue, Wollongong City Gallery, 1984.
- "Imposing exhibition dedicated to beach", Neville Weston, *The Advertiser*, 24.10.84.
- Fixed in Time — Australian Photographs 1845 to 1984*, exhibition catalogue, State Library of New South Wales, 1984.
- "Grace Cochrane, Richard Harris and Mark Johnson. Developed Image Gallery", Neville Weston, *Art-Network*, Summer 1985.

POSITIONS HELD

- | | |
|-----------|---|
| 1979 | Tutor, The Australian Centre for Photography Workshop. |
| 1982-1983 | Executive Committee, The Australian Centre for Photography. |
| 1983 | Editorial Committee, <i>Photofile</i> . |
| 1984-1985 | Editor, <i>Profile</i> . |

View north from Eighth Street. Old Distillation Plant. CSL 1986
© Mark Johnson



Jan Senbergs

Biography

- 1939 Born Riga, Latvia.
1950 Arrived in Australia.
1956-60 Melbourne School of Painting.

JAN SENBERGS CATALOGUE

1. 'THE SPIN'
Acrylic on Linen
167 x 183 cm
2. 'THE WASH'
Acrylic on Linen
167 x 183 cm
3. 'THE BREW'
Acrylic on Linen
167 x 183 cm
4. 'JOURNEY to PEYER'S PATCH'
Acrylic on Linen
167 x 183 cm
5. 'TOWARDS a HARMONY of the HUMORS'
Acrylic on Linen
167 x 183 cm
6. 'ATTACK of the PHAGOCYTES'
Acrylic on Linen
167 x 183 cm
7. — 13 UNTITLED DRAWINGS

ONE MAN EXHIBITIONS

- 1960 Richman Gallery, Melbourne.
1962 Argus Gallery, Melbourne.
1964 Georges Gallery, Melbourne.
1966 Rudy Komon Gallery, Sydney.
1969 Rudy Komon Gallery, Sydney.
1972 Gallery A, Melbourne.
1973 Art Gallery of Western Australia.
Art Gallery of South Australia.
Rudy Komon Gallery, Sydney.
San Paulo Biennale, Brazil.
1975 Mornington Peninsula Arts Centre — Ten Year Survey.
1976 Albert Hall, Canberra.
University of Melbourne.
1979 Rudy Komon Gallery, Sydney (drawings).
1981 Rudy Komon Gallery, Sydney.
1981 Powell Street Gallery, Melbourne.

- 1983 Powell Street Gallery, Melbourne.
1984 Tasmanian Museum and Art Gallery, Hobart.
1984 Queen Victorian Museum and Art Gallery, Launceston.
1984-1985 'Jan Senbergs — Selected Works', RMIT Gallery Touring Exhibition

SELECTED GROUP EXHIBITIONS

- 1964 Georges Invitation Art Prize.
1965 Sixth International Graphics Exhibition.
1966 International Graphic Arts Exhibition, Poland.
Young Australian Painters to Japan.
International Print Biennale, Tokyo.
1969 Bradford International Print Biennale.
Georges Invitation Art Prize.
1970 Ten Printmakers Print Council of Australia, Tokyo.
1971 Images — Australian Print Exhibition.
1976 William Angliss Art Prize.
1982 Georges Invitation Art Prize.
Queensland Trustees Prize.
Aspects of the Landscape — Shepparton Art Gallery, Benalla Art Gallery and Powell Street Gallery, Melbourne.
1984 Aspects of the Landscape, Powell Street Gallery, Melbourne, Geelong Art Gallery.
1985-1986 "The Dam", Powell Street Gallery and Regional Tour.
1985 "New Work", Powell Street Gallery.
1986 "Oz Drawing Now", Holdsworth Contemporary Gallery.

AWARDS

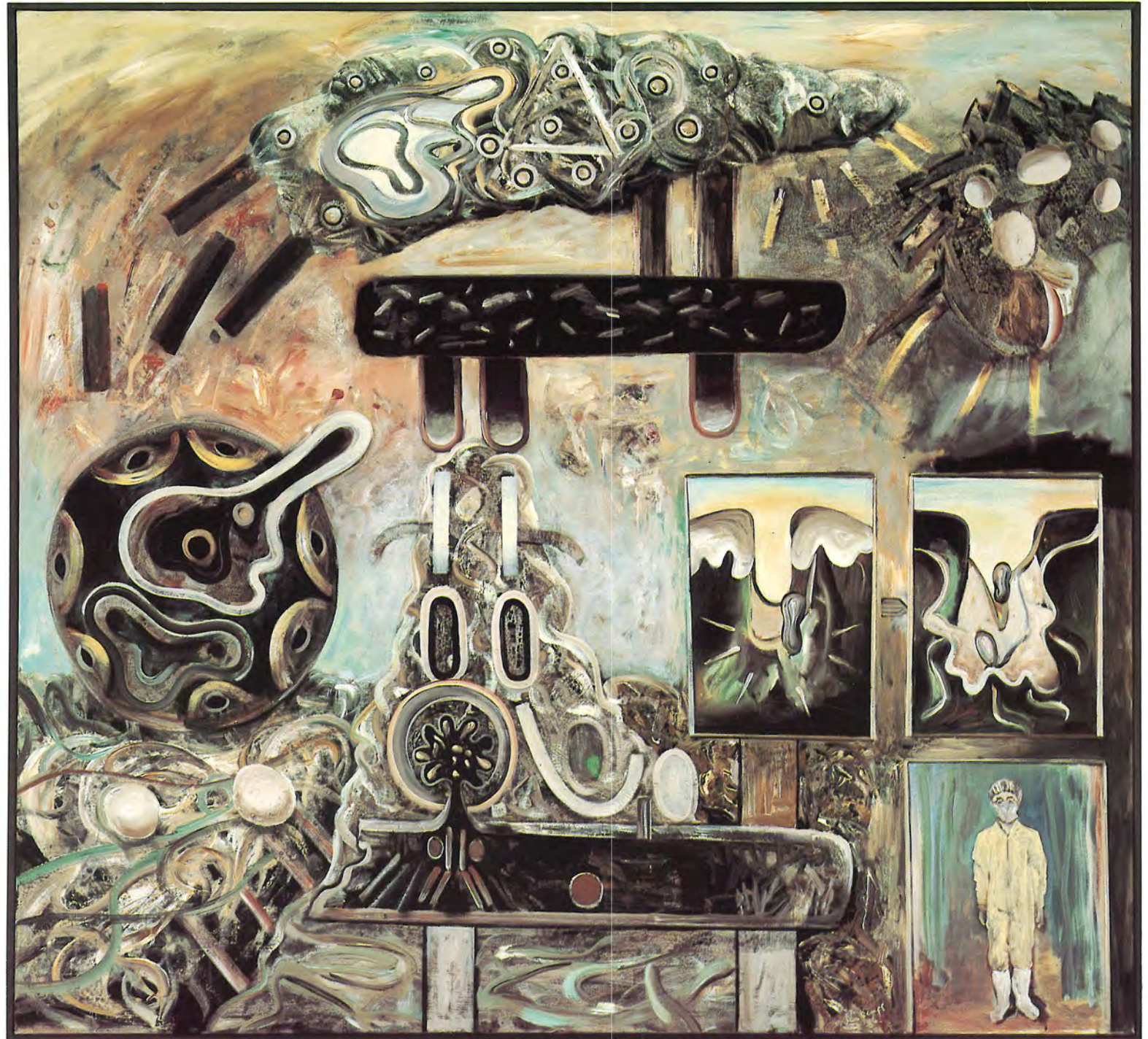
- 1964 Georges Commendation Prize.
1966 Helena Rubenstein Travelling Scholarship.
1970 Launceston Acquisition Prize.
1972 George Crouch Prize, Ballarat.
1976 Sir William Angliss Art Prize.
1982 Georges Prize.
1982 Queensland Trustees Prize.
1983 L.J. Harvey Drawing Prize, Queensland Art Gallery.
1984 Fremantle Drawing Prize.

COMMISSIONS

- 1977-1980 High Court of Australia, Canberra — relief panels in aluminium.
1979 National Bank Tapestry, woven by the Victorian Tapestry Workshop.
1984-1985 State Bank of New South Wales — Three Tapestry Panels.

COLLECTIONS

- Museum of Modern Art, New York.
Museum of Fine Arts, Houston, Texas.
Chase Manhattan Bank, New York.
Australian National Gallery, Canberra.
National Gallery of Victoria.
Art Gallery of New South Wales.
Queensland Art Gallery.
Art Gallery of South Australia.
Art Gallery of Western Australia.
Tasmanian Museum and Art Gallery.
Queen Victoria Museum and Art Gallery, Launceston.
Newcastle Region Art Gallery.
Artbank.
Wollongong City Art Gallery.
Geelong Art Gallery.
Ballarat Art Gallery.
Warrnambool Art Gallery.
Burnie Art Gallery.
Latrobe Valley Arts Centre.
Sale Art Gallery.
High Court of Australia, Canberra.
Federal Court, Melbourne.
Law Council of Victoria.
National Bank Collection.
State Bank of Victoria.
State Bank of New South Wales.
Myer Collection of Australian Painting.
Numerous University, College, Corporate and Private Collections.



Attack of the Phagocytes: Jan Senbergs

Published by:
Commonwealth Serum Laboratories Commission,
Parkville, Victoria

Photography:
John Brash

Exhibition Co-ordination:
Powell Street Gallery,
20 Powell Street, South Yarra 3141

Touring Company:
Art Freeway,
20 Powell Street, South Yarra 3141

Artwork:
Bandaid Productions Pty Ltd
54 Smith Street, Collingwood 3066

Printing:
Photo Offset Productions
30 Kerr Street, Fitzroy 3065